



KT-LED36PSHID-E26-8CSB-D

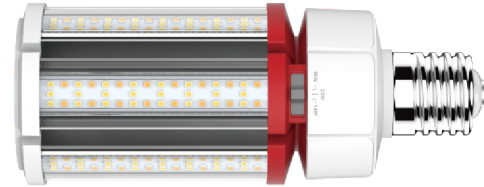
HID REPLACEMENT LED LAMP

DESCRIPTION

Power Selectable + Color Selectable 36W HID Replacement LED Lamp | 80 CRI | IP64



LAMP TYPE: HID Replacement LED
BASE TYPE: E26 (Medium)
SELECTABLE WATTAGE: 36W, 27W, 18W
SELECTABLE COLOR TEMPERATURE: 5000K, 4000K, 3000K
METAL HALIDE EQUIVALENT: 150W
COLOR RENDERING INDEX (CRI): > 80
WARRANTY: 5 Years



PRODUCT FEATURES

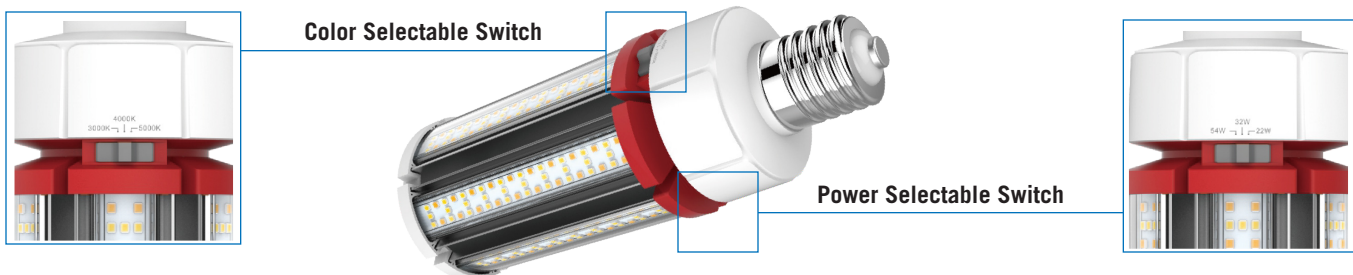
- Replacement for conventional metal halide lamp
- Selectable wattage: 36W, 27W, 18W
- Selectable CCT: 5000K, 4000K, 3000K
- Not for use with standard dimmers; see instructions
- 50,000+ hour lifetime
- Environmentally friendly: No mercury used
- Instant startup
- Operating temperature: -40°C/-40°F to 60°C/140°F
- Integral driver, eliminates the need for external driver or ballast; includes 4kV surge protection
- UL listed
- IP64 rated; integrated heat sink quickly dissipates heat and guides water intrusion out of the lamp
- Suitable for use in fully enclosed fixture

ELECTRICAL AND PERFORMANCE SPECIFICATIONS

Keystone Catalog Number	Input Voltage	Selectable Power	Selectable CCT	Base Type	CRI	Lumens	Efficacy
KT-LED36PSHID-E26-8CSB-D	120-277V	36W	3000K	E26	>80	4860 lm	135 lm/W
			4000K			5220 lm	145 lm/W
			5000K			5040 lm	140 lm/W
	120-277V	27W	3000K	E26	>80	3645 lm	135 lm/W
			4000K			3915 lm	145 lm/W
			5000K			3780 lm	140 lm/W
	120-277V	18W	3000K	E26	>80	2430 lm	135 lm/W
			4000K			2610 lm	145 lm/W
			5000K			2520 lm	140 lm/W

* Color Uniformity: CCT (Correlated Color Temperature) range as per guidelines outlined in ANSI C78.377-2017

SELECTABILITY

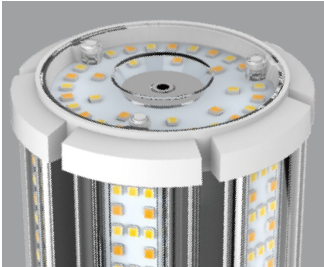




KT-LED36PSHID-E26-8CSB-D

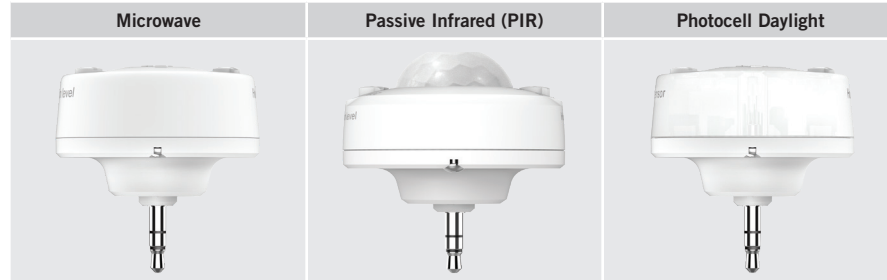
HID REPLACEMENT LED LAMP

SMART PORT LED



On the top of the lamp is a low-voltage AUX port for lamp level sensor controls.

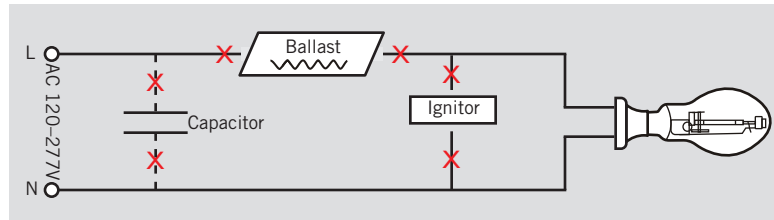
SMART PORT LED AUX SENSORS



WIRING INSTRUCTIONS

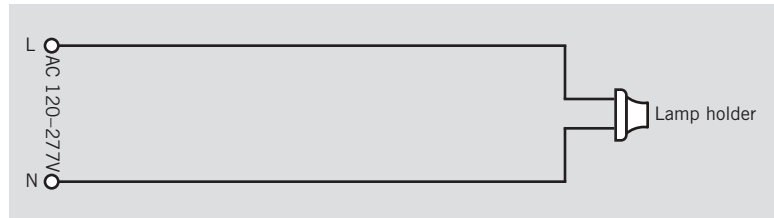
STEP 1

Disconnect power. Disconnect and remove existing ballast, capacitor, and/or ignitor (where applicable) from fixture.



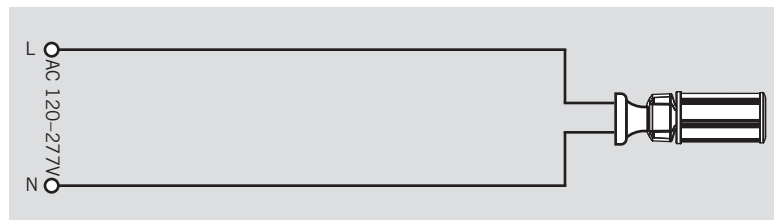
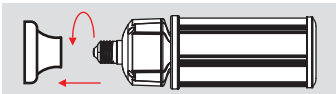
STEP 2

Rewire for line voltage to the lamp socket.



STEP 3

Install new LED replacement lamp. Ensure lamp is operating properly when power is turned on.

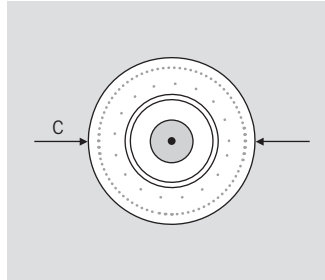
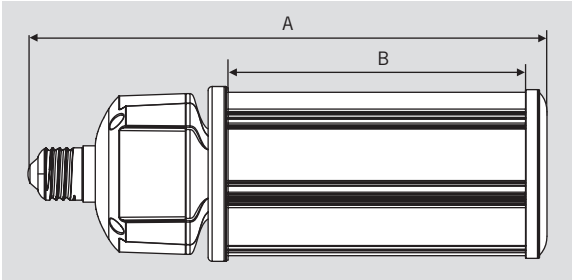




KT-LED36PSHID-E26-8CSB-D

HID REPLACEMENT LED LAMP

PHYSICAL CHARACTERISTICS



LAMP DIMENSIONS

A (Body Length)	7.90"
B (Illuminated Length)	3.87"
C (Diameter)	3.30"

BASE TYPE: E26 (Medium)

ORDERING INFORMATION

CATALOG NUMBER	PACK QTY.	EASY CODE	UPC
KT-LED36PSHID-E26-8CSB-D	6	FAC-85	843654126999

CATALOG NUMBER BREAKDOWN

KT-LED36PSHID-E26-8CSB-D

1 2 3 4 5 6 7 8 9 10

- 1 Keystone Technologies
- 2 LED Lamp
- 3 Wattage
- 4 Power Selectable
- 5 Lamp Type
- 6 Base Type
- 7 800 Series
- 8 Color Selectable
- 9 Color Select Designation
- 10 Direct Drive

COLOR SELECT DESIGNATION

A	3000K, 4000K, 5000K
B	3000K, 4000K, 5000K
C	3000K, 3500K, 4000K, 5000K
D	TBD